

2012 ANNUAL REPORT



NORTHEAST WISCONSIN
LAND TRUST
Preserving Our Natural Heritage



We all recognize the essential role water plays in our daily lives and in the vitality of our communities. We can make a positive difference by taking action in our own backyards and neighborhoods. What we do here impacts the waters on which we depend. With this in mind, the land trust mounted a targeted outreach and education campaign to reach landowners in Marinette, Oconto and Brown Counties. With a host of meetings and materials we spread the message that we are here to assist families who wish to preserve wetlands and shorelines along the Bay of Green Bay.

We chose this region because the waters of Green Bay and its tributaries are a particularly valuable and high functioning part of Lake Michigan. One-third of all the surface water that drains into Lake Michigan flows through the Bay. Also, it is estimated that the west shore of Green Bay was once home to more than 50% of the lake's coastal wetlands and that 70% of those have already been lost. This makes our efforts so much more critical. These wetlands and shorelines are important for water quality and the health of the Bay but they also provide crucial habitat for wildlife, places for migrating birds, and the spawning grounds for our favorite fish species.

To highlight this important region, NEWLT purchased a parcel which is now a wetland preserve on an exceptionally high quality tributary stream and will be open to the public in 2013.

In the Fox Valley area we likewise sought to bring attention to the value of wetlands. We increased access to our Guckenbergs-Sturm Preserve near Strobe Island in the Town of Menasha. Through the generous support of numerous businesses and individuals, a floating boardwalk and platform now provides the public with an up close view of eagles, sandhill cranes, nesting and migrating waterfowl, and other wildlife. NEWLT wants to share the beauty of this rare marsh as well as inform visitors about the positive effect this area has on the health of local waterways.

Thank you to all our financial supporters and many volunteers who have contributed greatly to the NEWLT successes of this past year.

Richard Gosse, Board Chairperson
Deborah Nett, Executive Director



Julie Hawkins-Tyrriver, Deb Nett, and Jim Klinkert



NORTHEAST WISCONSIN
LAND TRUST
Preserving Our Natural Heritage

2011 Board of Directors

President

Dick Gosse – Outagamie County

Vice President

Jim Resick – Brown County

Treasurer

William Geenen – Outagamie County

Secretary

Laura Meronk – Outagamie County

Kim Biedermann – Winnebago County

Tim Douglas – Brown County

Kelly Helein – Outagamie County

Amelia Rugland – Outagamie County

Tim Schmidt – Calumet County

Dennis Simon – Winnebago County

Stephanie Vrabec – Winnebago County

Teresa Weglarz – Outagamie county

2012 Land Trust Staff

Deb Nett

Executive Director

Ryan Bessette

Green Bay West Shore Project Coordinator

Julie Hawkins-Tyrriver

Land Stewardship Coordinator

Kari Hopfensperger

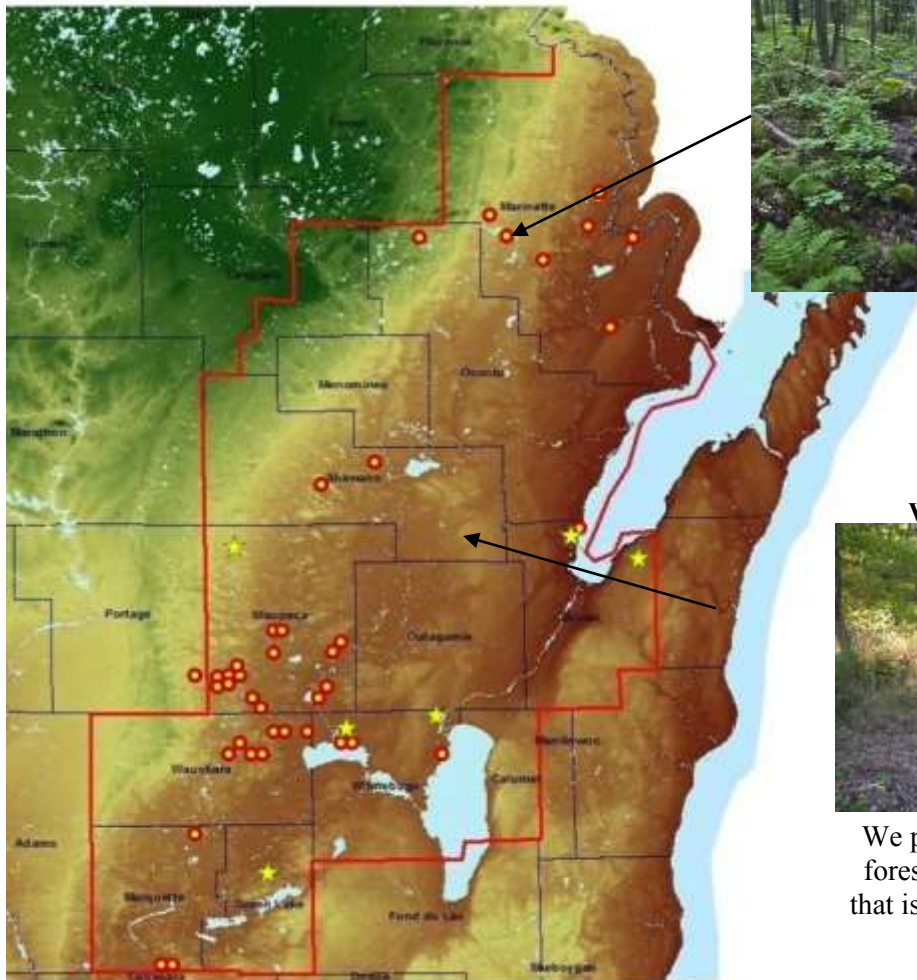
Administrative & Communications Coordinator

Jim Klinkert

Director of Land Acquisition

Protected Land in 2012 — West Shore Wetlands & Northern Forests

Two properties totaling 89.1 acres were preserved by the land trust in 2012 bringing the total number of properties protected by the Northeast Wisconsin Land Trust to 46 and a grand total of 4683.8 acres.



Caldron Falls Conservancy



55 acres of ephemeral stream near Caldron Falls Reservoir were preserved. This property is adjacent to the Peshtigo River State Forest.



The West Shore Preserve is a restored Northern Pike habitat. The cool shallow stream running through this preserve provides excellent spawning grounds for these fish in spring.

West Shore Preserve



We purchased **34.1 acres** of forested west shore wetland that is now open to the public.



BALANCE SHEET

ASSETS

Cash	\$53,160
Beneficial Interest in assets held by Community Foundations	\$89,851
Conservation land and equipment	\$456,725
Total Assets	\$658,369

LIABILITIES

Current Liabilities	\$5,783
Total Liabilities	\$5,783
Net Assets	\$814,611
Total Liabilities and Net Assets	\$820,394

REVENUES AND EXPENSES

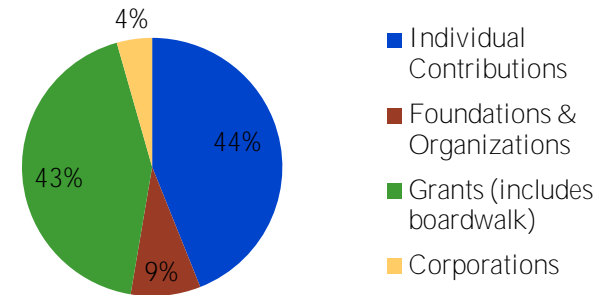
REVENUES

Donations (cash)	\$188,211
Memberships	\$31,550
In kind	\$73,710
Investment loss, net of \$563 expenses	(\$1,500)
Total Revenues	\$291,971

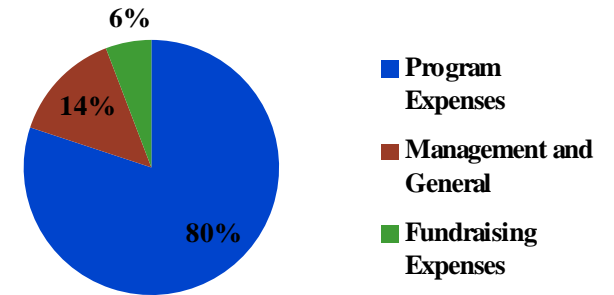
EXPENSES

Program	\$220,640
Administrative	\$36,192
Fundraising	\$22,840
Total Expenses	\$279,672

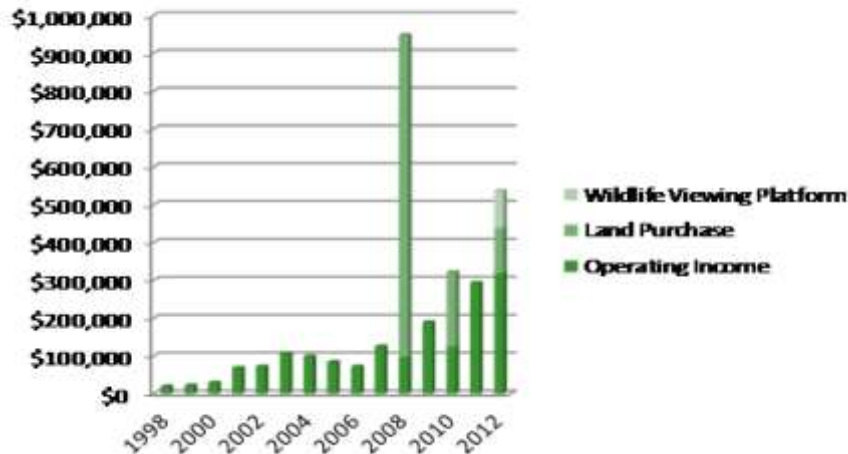
2012 SOURCES OF FUNDING



2012 USE OF FUNDS



INCOME WITH LAND PURCHASES



**LAND STEWARDSHIP FUNDS
\$ 316,980**

**TOTAL VALUE OF PRESERVED
LANDS \$8,479,573**